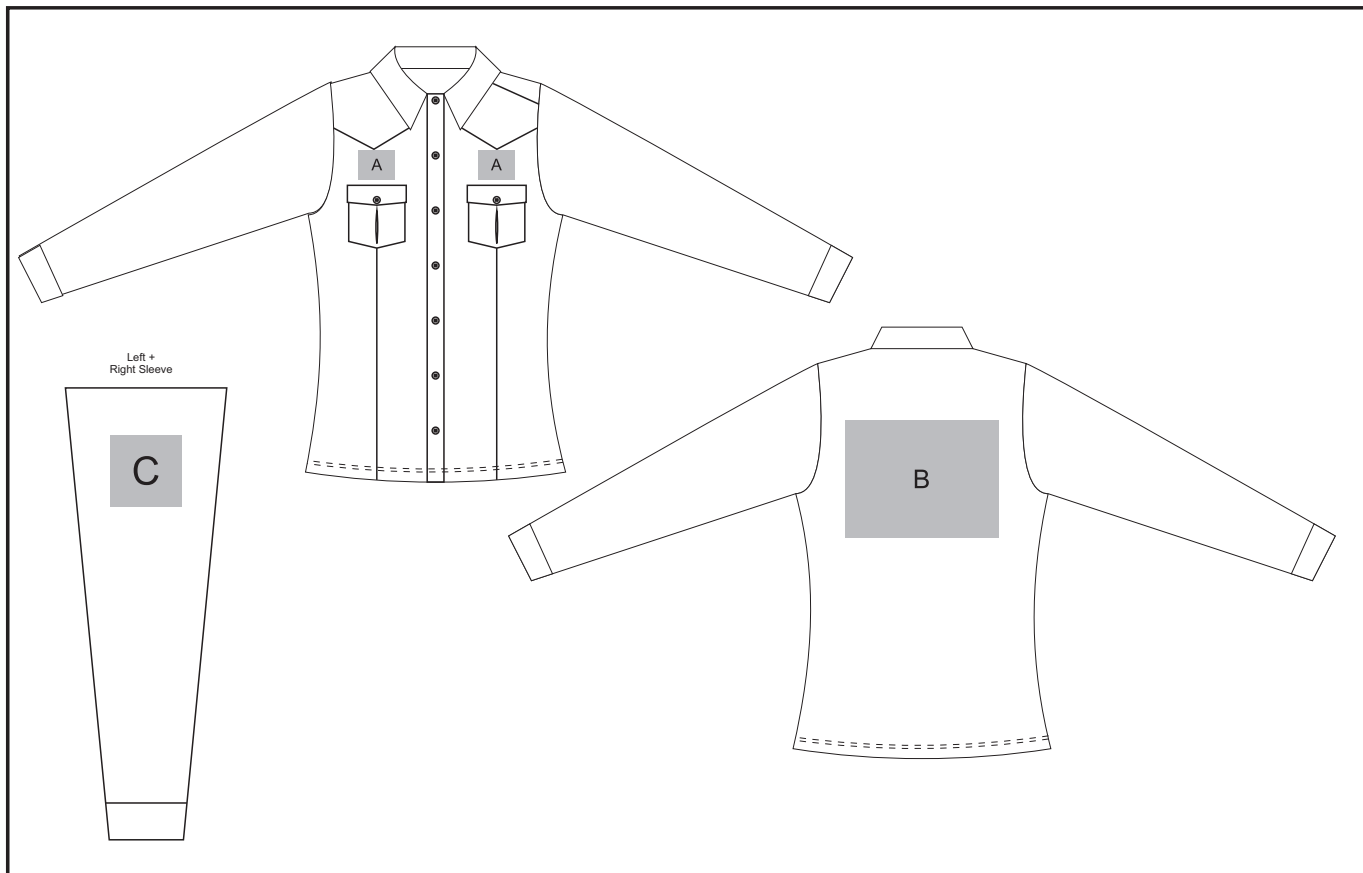


ALT-RBY

Ruby Blouse



Need to know:

- Includes 1 Position Digital Transfer (setup fee applies)
- **Cannot guarantee a 100% straight branding on any clothing item with check or stripe detail**
- **DTC inclusive Parameters: Left/Right Chest=100mm x 100mm OR Back = 800mm²**

Branding Options:

Position A

1. Embroidery (EMB) - 9 colours
Size: 100mm wide x 80mm high
2. Screen Print (SA) - 1 colours
Size: 100mm wide x 80mm high
3. Digital Transfer Clothing (DTC) - Full colour
Size: 100mm wide x 80mm high

Position B

1. Embroidery (EMB) - 9 colours
Size: 200mm wide x 200mm high
2. Screen Print (SA) - 1 colours
Size: 260mm wide x 200mm high
3. Digital Transfer Clothing (DTC) - Full colour
Size: 210mm wide x 148mm high

Position C

1. Embroidery (EMB) - 9 colours
Size: 80mm diameter
2. Screen Print (SA) - 1 colours
Size: 60mm wide x 60mm high
3. Digital Transfer Clothing (DTC) - Full colour
Size: 80mm wide x 80mm high